

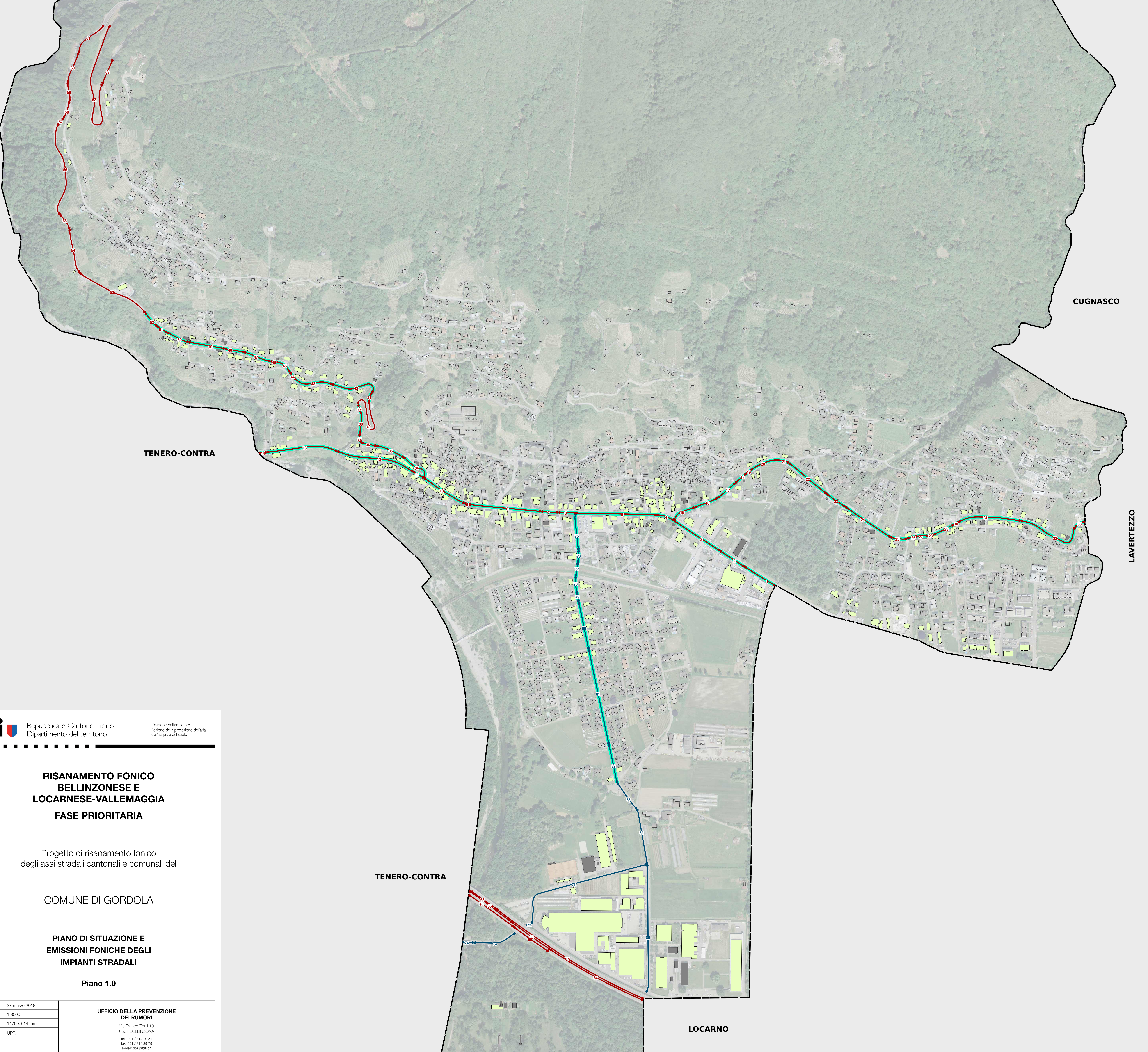
**RISANAMENTO FONICO  
 BELLINZONESE E  
 LOCARNESE-VALLEMAGGIA  
 FASE PRIORITARIA**

Progetto di risanamento fonico  
 degli assi stradali cantonali e comunali del

COMUNE DI GORDOLA

**PIANO DI SITUAZIONE E  
 EMISSIONI FONICHE DEGLI  
 IMPIANTI STRADALI**

Piano 1.0



**Tabella delle emissioni foniche**

Segmento n°	Asse	Proprietario	Pendenza %	TGM	Coefficiente G N	% VP		K1		Pendenza k dB(A)	Situazione prima del risanamento		Situazione dopo il risanamento						
						G	N	G	N		Velocità km/h	Pavimentazione k dB(A)	Emissioni dB(A) G N	Velocità km/h	Pavimentazione k dB(A)	Emissioni dB(A) G N			
1	P13	TI	0	13861	0.058	0.009	10	5	0.00	0.00	0	60	0	79.8	70.4	50	-3	75.7	66.2
2	P13	TI	0	13861	0.058	0.009	10	5	0.00	0.00	0	50	0	78.7	69.2	50	-3	75.7	66.2
3	P13	TI	0	13861	0.058	0.009	10	5	0.00	0.00	0	50	0	76.7	69.2	50	-3	75.7	66.2
4	P13	TI	4	17669	0.058	0.009	10	5	0.00	0.00	0.2	50	0	89	70.4	50	-3	77	67.4
5	P13	TI	5	11206	0.058	0.009	10	5	0.00	0.00	0.4	50	0	78.2	68.7	50	-3	75.2	65.7
6	P13	TI	5	10417	0.058	0.009	10	5	0.00	-0.28	0.4	50	0	77.9	68.1	50	-3	74.9	65.1
7	P13	TI	0	10417	0.058	0.009	10	5	0.00	-0.28	0	50	0	77.5	67.7	50	-3	74.5	64.7
8	P13	TI	0	8272	0.058	0.009	10	5	0.00	-1.28	0	50	0	76.5	65.7	50	-3	73.5	62.7
9	P13	TI	3	8272	0.058	0.009	10	5	0.00	-1.28	0	50	0	76.5	65.7	50	-3	73.5	62.7
10	P13	TI	0	8272	0.058	0.009	10	5	0.00	-1.28	0	50	0	76.5	65.7	50	-3	73.5	62.7
11	P13	TI	0	12255	0.058	0.009	10	5	0.00	0.00	0	50	0	78.2	68.7	50	-3	75.2	65.7
12	P13	TI	0	12255	0.058	0.009	10	5	0.00	0.00	0	50	1	79.2	69.7	50	-3	76.2	65.7
13	P13	TI	3	12255	0.058	0.009	10	5	0.00	0.00	0	50	1	79.2	69.7	50	-3	76.2	65.7
14	P13	TI	0	12255	0.058	0.009	10	5	0.00	0.00	0	50	1	79.2	69.7	50	-3	76.2	65.7
15	S410	TI	0	3798	0.058	0.009	10	5	0.00	-4.66	0	50	0	73.1	58.9	50	-3	70.1	55.9
16	S410	TI	5	3798	0.058	0.009	10	5	0.00	-4.66	0.4	50	0	73.5	59.3	50	-3	70.5	56.3
17	S410	TI	7	3798	0.058	0.009	10	5	0.00	-4.66	0.8	50	0	73.9	59.7	50	-3	70.9	56.7
18	S410	TI	6	3798	0.058	0.009	10	5	0.00	-4.66	0.6	50	0	73.7	59.5	50	-3	70.7	56.5
19	S410	TI	4	3798	0.058	0.009	10	5	0.00	-4.66	0.2	50	0	73.3	59.1	50	-3	70.3	56.1
20	S410	TI	5	3798	0.058	0.009	10	5	0.00	-4.66	0.4	50	0	73.5	59.3	50	-3	70.5	56.3
21	S410	TI	6	3798	0.058	0.009	10	5	0.00	-4.66	0.6	50	0	73.7	59.5	50	-3	70.7	56.5
22	S410	TI	4	2337	0.058	0.009	10	5	0.00	-5.00	0.2	50	0	71.2	56.7	50	-3	68.2	53.7
23	S410	TI	0	2337	0.058	0.009	10	5	0.00	-5.00	0	50	0	71	56.5	50	-3	68	53.5
24	S410	TI	0	2337	0.058	0.009	10	5	0.00	-5.00	0	50	1	72	57.5	50	-3	68	53.5
25	S410	TI	0	2365	0.058	0.009	10	5	0.00	-5.00	0	50	1	72.1	57.5	50	-3	68.1	53.5
26	S410	TI	3	2309	0.058	0.009	10	5	0.00	-5.00	0	50	1	72	57.4	50	-3	68	53.4
27	S410	TI	0	2309	0.058	0.009	10	5	0.00	-5.00	0	50	1	72	57.4	50	-3	68	53.4
28	S410	TI	3	2309	0.058	0.009	10	5	0.00	-5.00	0	50	1	72	57.4	50	-3	68	53.4
29	S410	TI	3	2309	0.058	0.009	10	5	0.00	-5.00	0	50	2	73	58.4	50	-3	69	53.4
30	S410	TI	5	2309	0.058	0.009	10	5	0.00	-5.00	0.4	50	2	73.4	58.8	50	-3	69.4	53.8
31	S410	TI	6	2309	0.058	0.009	10	5	0.00	-5.00	0.6	50	2	73.6	59	50	-3	69.6	54
32	S410	TI	8	2309	0.058	0.009	10	5	0.00	-5.00	0.6	50	0	71.6	57	50	-3	68.6	54
33	S410	TI	7	2309	0.058	0.009	10	5	0.00	-5.00	0.8	50	0	71.8	57.2	50	-3	68.8	54.2
34	S411	TI	7	3533	0.058	0.009	10	5	0.00	-4.98	0.8	50	0	73.6	59.1	50	-3	70.6	56.1
35	S411	TI	10	3533	0.058	0.009	10	5	0.00	-4.98	1.4	50	0	74.2	59.7	50	-3	71.2	56.7
36	S411	TI	11	3533	0.058	0.009	10	5	0.00	-4.98	1.6	50	0	74.4	59.9	50	-3	71.4	56.9
37	S411	TI	11	3533	0.058	0.009	10	5	0.00	-4.98	1.6	50	1	75.4	60.9	50	-3	71.4	56.9
38	S411	TI	12	3533	0.058	0.009	10	5	0.00	-4.98	1.8	50	1	75.6	61.1	50	-3	71.6	57.1
39	S411	TI	6	3533	0.058	0.009	10	5	0.00	-4.98	0.6	80	2	78.7	64.4	80	-3	73.7	59.4
40	S411	TI	6	3533	0.058	0.009	10	5	0.00	-4.98	0.6	80	0	76.7	62.4	80	0	76.7	62.4
41	S411	TI	6	3533	0.058	0.009	10	5	0.00	-4.98	0.6	50	0	73.4	58.9	50	-3	70.4	55.9
42	S411	TI	6	3533	0.058	0.009	10	5	0.00	-4.98	0.6	50	1	74.4	59.9	50	-3	70.4	55.9
43	S411	TI	9	3533	0.058	0.009	10	5	0.00	-4.98	1.2	50	1	75	60.5	50	-3	71	56.5
44	S411	TI	9	3533	0.058	0.009	10	5	0.00	-4.98	1.2	50	0	74	59.5	50	-3	71	56.5
45	S411	TI	10	3533	0.058	0.009	10	5	0.00	-4.98	1.4	50	0	74.2	59.7	50	-3	71.2	56.7
46	S411	TI	10	3533	0.058	0.009	10	5	0.00	-4.98	1.4	50	1	75.2	60.7	50	-3	71.2	56.7
47	S411	TI	9	3765	0.058	0.009	10	5	0.00	-4.70	1.2	50	1	75.3	61	50	-3	71.3	57
48	S411	TI	9	3765	0.058	0.009	10	5	0.00	-4.70	1.2	50	0	74.3	60	50	-3	71.3	57
49	S411	TI	7	3608	0.058	0.009	10	5	0.00	-4.88	0.8	50	0	73.7	59.3	50	-3	70.7	56.3
50	S411	TI	11	3608	0.058	0.009	10	5	0.00	-4.88	1.6	50	0	74.5	60.1	50	-3	71.5	57.1
51	S411	TI	12	3608	0.058	0.009	10	5	0.00	-4.88	1.8	50	0	74.7	60.3	50	-3	71.7	57.3
52	S411	TI	12	3608	0.058	0.009	10	5	0.00	-4.88	1.8	80	0	77.9	63.8	80	-3	74.9	60.8
53	S411	TI	8	3577	0.058	0.009	10	5	0.00	-4.92	1	80	0	77.1	62.9	80	0	77.1	62.9
54	S411	TI	8	3577	0.058	0.009	10	5	0.00	-4.92	1	80	2	79.1	64.9	80	2	79.1	64.9
55	S411	TI	8	3577	0.058	0.009	10	5	0.00	-4.92	1	80	0	77.1	62.9	80	0	77.1	62.9
56	S411	TI	8	3577	0.058	0.009	10	5	0.00	-4.92	1	80	2	79.1	64.9	80	2	79.1	64.9
57	S411	TI	5	3577	0.058	0.009	10	5	0.00	-4.92	0.4	80	2	78.5	64.3	80	2	78.5	64.3
58	S411	TI	5	3577	0.058	0.009	10	5	0.00	-4.92	0.4	80	0	76.5	62.3	80	0	76.5	62.3
59	S411	TI	5	3932	0.058	0.009	10	5	0.00	-4.51	0.4	80	0	76.9	63.1	80	0	76.9	63.1
60	S411	TI	5	3932	0.058	0.009	10	5	0.00	-4.51	0.4	80	2	78.9	65.1	80	2	78.9	65.1
61	S411	TI	5	3932	0.058	0.009	10	5	0.00	-4.51	0.4	80	2	78.9	65.1	80	2	78.9	65.1
62	S411	TI	6	3932	0.058	0.009	10	5	0.00	-4.51	0.6	80	0	77.1	63.3	80	0	77.1	63.3
63	S411	TI	8	3932	0.058	0.009	10	5	0.00	-4.51	1	80	2	79.5	65.7	80	2	79.5	65.7
64	PA13	TI	0	23369	0.058	0.009	10	5	0.00	0.00	0	100	2	88.1	79	100	2	88.1	79
65	PA13	TI	0	20171	0.058	0.009	10	5	0.00	0.00	0	100	2	87.4	78.4	100	2	87.4	78.4
66	PA13	TI	0	20171	0.058	0.009	10	5	0.00	0.00	0	100	2	87.4	78.4	100	2	87.4	78.4
67	PA13	TI	0	23523	0.058	0.009	10	5	0.00	0.00	0	100	2	88.1	79	100	2	88.1	79
68	PA13	TI	0	23523	0.058	0.009	10	5	0.00	0.00	0	100	2	88.1	79	100	2	88.1	79
69	PA13TE	TI	0	3189	0.058	0.009	10	5	0.00	-5.00	0	80	2	77.6	63.3	80	2	77.6	63.3
70	PA13TE	TI	0	3189	0.058	0.009	10	5	0.00	-5.00	0	80	2	77.6	63.3	80	2	77.6	63.3
71	Via Breve	GORDOLA	0	1226	0.058	0.009	10	5	-1.48	-5.00									