

**RISANAMENTO FONICO  
 BELLINZONESE E  
 LOCARNESE-VALLEMAGGIA  
 FASE PRIORITARIA**

Progetto di risanamento fonico degli assi stradali cantonali del

**COMUNE DI GAMBAROGNO**  
 Sezione di MAGADINO

**PIANO DI SITUAZIONE E  
 EMISSIONI FONICHE DEGLI  
 IMPIANTI STRADALI**

Piano 1.0

Data:	27 marzo 2018	<b>UFFICIO DELLA PREVENZIONE          DEI RUMORI</b> Via Marco Zappi 13 6501 BELLINZONA tel. 091 / 814.29.51 fax 091 / 814.29.79 e-mail: uti.up@ti.ch
Scala:	1:3000	
Dim.:	1260 x 914 mm	
Operatore:	UPR	

**Legenda**

**Fonti di emissione**

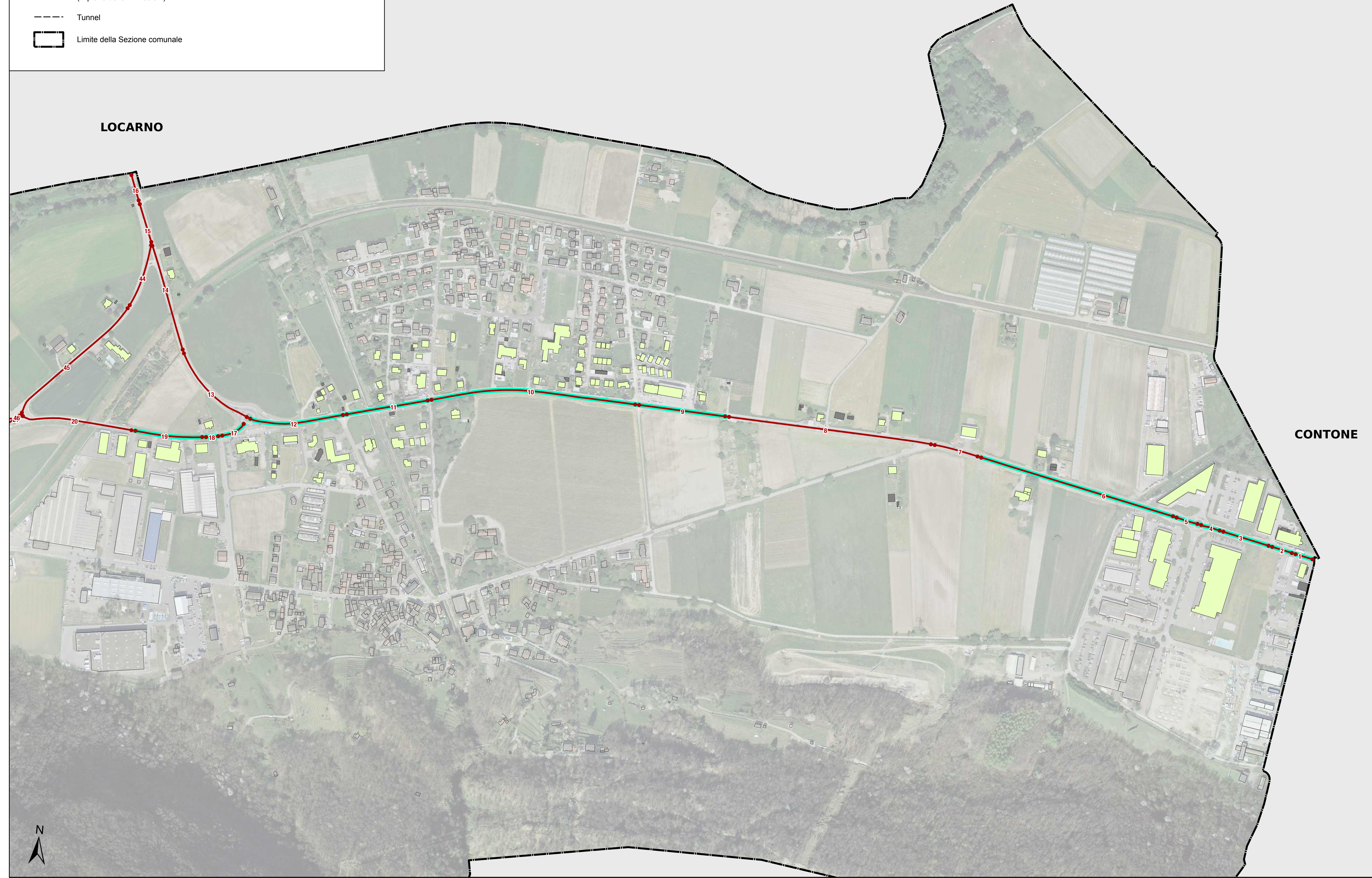
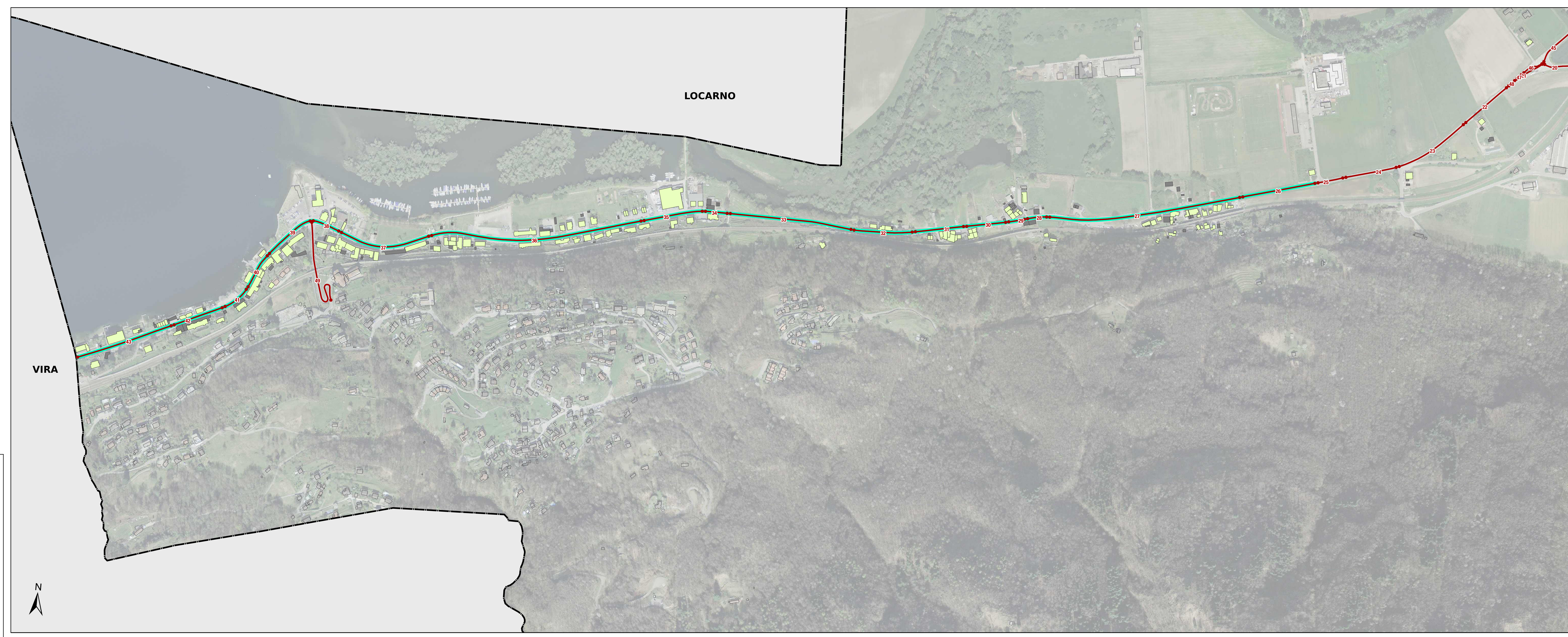
- Strade cantonali

**Edifici**

- Edifici con locali sensibili che rientrano nell'area di calcolo del progetto
- Edifici senza locali sensibili (accessori) che rientrano nell'area di calcolo del progetto
- Edifici esclusi dall'area di calcolo del progetto

**Altri elementi**

- Traite con interventi di limitazione delle emissioni foniche (v. piano delle immissioni)
- Tunnel
- Limite della Sezione comunale



**Tabella delle emissioni foniche**

Segmento n°	Asse	Proprietario	Pendenza %	TGM	Coefficiente		% VP		K1		Pendenza kdB(A)	Situazione prima del risanamento				Situazione dopo il risanamento			
					G	N	G	N	G	N		Velocità km/h	Pavimentazione kdB(A)	Emissioni dB(A)		Velocità km/h	Pavimentazione kdB(A)	Emissioni dB(A)	
														G	N	G	N		
1	PT406	TI	0	37065	0.058	0.009	10	5	0.0	0.0	0	60	0	84.1	74.6	50	-3	80	70.5
2	PT406	TI	0	36938	0.058	0.009	10	5	0.0	0.0	0	60	0	84.1	74.6	50	-3	80	70.4
3	PT406	TI	0	36425	0.058	0.009	10	5	0.0	0.0	0	60	0	84	74.6	50	-3	79.9	70.4
4	PT406	TI	0	36425	0.058	0.009	10	5	0.0	0.0	0	60	1	85	75.6	50	-3	79.9	70.4
5	PT406	TI	0	37186	0.058	0.009	10	5	0.0	0.0	0	60	1	85.1	75.6	50	-3	80	70.5
6	PT406	TI	0	37186	0.058	0.009	10	5	0.0	0.0	0	60	0	84.1	74.6	50	-3	80	70.5
7	PT406	TI	0	37186	0.058	0.009	10	5	0.0	0.0	0	60	0	84.1	74.6	60	0	84.1	74.6
8	PT406	TI	0	36170	0.058	0.009	10	5	0.0	0.0	0	60	0	84	74.5	60	0	84	74.5
9	PT406	TI	0	36170	0.058	0.009	10	5	0.0	0.0	0	60	0	84	74.5	60	-3	81	71.5
10	PT406	TI	0	34795	0.058	0.009	10	5	0.0	0.0	0	60	0	83.8	74.4	50	-3	79.7	70.2
11	PT406	TI	0	35731	0.058	0.009	10	5	0.0	0.0	0	60	0	83.9	74.5	50	-3	79.9	70.3
12	PT406	TI	0	36795	0.058	0.009	10	5	0.0	0.0	0	60	0	84.1	74.6	50	-3	80	70.4
13	PT406	TI	0	34562	0.058	0.009	10	5	0.0	0.0	0	60	0	83.8	74.3	60	0	83.9	74.3
14	PT406	TI	0	34562	0.058	0.009	10	5	0.0	0.0	0	60	0	86	76.7	80	0	86	76.7
15	PT406	TI	0	37919	0.058	0.009	10	5	0.0	0.0	0	80	0	86.4	77.1	80	0	86.4	77.1
16	PT406	TI	0	37919	0.058	0.009	10	5	0.0	0.0	0	80	0	86.4	77.1	80	0	86.4	77.1
17	PT405	TI	0	10609	0.058	0.009	10	5	0.0	-0.2	0	60	0	78.7	69	60	-3	75.7	66
18	PT405	TI	0	10060	0.058	0.009	10	5	0.0	-0.4	0	60	0	78.4	68.5	60	-3	75.4	65.5
19	PT405	TI	0	10060	0.058	0.009	10	5	0.0	-0.4	0	60	2	80.4	70.5	60	-3	75.4	65.5
20	PT405	TI	0	9949	0.058	0.009	10	5	0.0	-0.5	0	60	2	80.4	70.4	60	2	80.4	70.4
21	PT405	TI	0	6697	0.058	0.009	10	5	0.0	-2.2	0	60	2	78.7	67	60	2	78.7	67
22	PT405	TI	0	13310	0.058	0.009	10	5	0.0	0.0	0	60	2	81.7	72.2	60	2	81.7	72.2
23	PT405	TI	0	13310	0.058	0.009	10	5	0.0	0.0	0	80	2	83.8	74.5	80	2	83.8	74.5
24	PT405	TI	0	13242	0.058	0.009	10	5	0.0	0.0	0	80	2	83.8	74.5	80	2	83.8	74.5
25	PT405	TI	0	13242	0.058	0.009	10	5	0.0	0.0	0	60	2	81.6	72.2	60	2	81.6	72.2
26	PT405	TI	0	13242	0.058	0.009	10	5	0.0	0.0	0	60	2	81.6	72.2	60	-3	76.6	67.2
27	PT405	TI	0	13242	0.058	0.009	10	5	0.0	0.0	0	50	2	80.5	71	50	-3	75.5	66
28	PT405	TI	0	13242	0.058	0.009	10	5	0.0	0.0	0	50	2	80.5	71	50	-3	75.5	66
29	PT405	TI	0	12809	0.058	0.009	10	5	0.0	0.0	0	50	0	78.4	68.8	50	-3	75.4	65.8
30	PT405	TI	0	12382	0.058	0.009	10	5	0.0	0.0	0	50	0	78.3	68.7	50	-3	75.3	65.7
31	PT405	TI	3	12382	0.058	0.009	10	5	0.0	0.0	0	50	0	78.3	68.7	50	-3	75.3	65.7
32	PT405	TI	3	12382	0.058	0.009	10	5	0.0	0.0	0	50	0	78.3	68.7	50	-3	75.3	65.7
33	PT405	TI	0	12382	0.058	0.009	10	5	0.0	0.0	0	60	0	79.3	69.9	60	-3	76.3	66.9
34	PT405	TI	4	12382	0.058	0.009	10	5	0.0	0.0	0.2	50	0	78.5	68.9	50	-3	75.5	65.9
35	PT405	TI	4	12382	0.058	0.009	10	5	0.0	0.0	0.2	50	0	78.5	68.9	50	-3	75.5	65.9
36	PT405	TI	0	12382	0.058	0.009	10	5	0.0	0.0	0	50	0	78.3	68.7	50	-3	75.3	65.7
37	PT405	TI	0	11083	0.058	0.009	10	5	0.0	0.0	0	50	0	77.8	68.2	50	-3	74.8	65.2
38	PT405	TI	3	11083	0.058	0.009	10	5	0.0	0.0	0	50	0	77.8	68.2	50	-3	74.8	65.2
39	PT405	TI	0	10502	0.058	0.009	10	5	0.0	-0.2	0	50	0	77.5	67.7	50	-3	74.5	64.7
40	PT405	TI	0	10310	0.058	0.009	10	5	0.0	-0.3	0	50	2	79.5	69.6	50	-3	74.5	64.6
41	PT405	TI	0	10310	0.058	0.009	10	5	0.0	-0.3	0	50	0	77.5	67.6	50	-3	74.5	64.6
42	PT405	TI	0	10196	0.058	0.009	10	5	0.0	-0.4	0	50	0	77.4	67.5	50	-3	74.4	64.5
43	PT405	TI	0	10167	0.058	0.009	10	5	0.0	-0.4	0	50	0	77.4	67.5	50	-3	74.4	64.5
44	PT405.1	TI	0	3357	0.058	0.009	10	5	0.0	-5.0	0	60	2	75.7	61.2	60	2	75.7	61.2
45	PT405.1	TI	0	3357	0.058	0.009	10	5	0.0	-5.0	0	60	1	74.7	60.2	60	1	74.7	60.2
46	PT405.1	TI	0	6609	0.058	0.009	10	5	0.0	-2.3	0	60	1	77.6	65.9	60	1	77.6	65.9
47	PT405.1	TI	0	6609	0.058	0.009	10	5	0.0	-2.3	0	60	2	78.6	66.9	60	2	78.6	66.9
48	PT405.1	TI	0	6613	0.058	0.009	10	5	0.0	-2.3	0	60	2	78.6	66.9	60	2	78.6	66.9
49	S403	TI	10	1075	0.058	0.009	10	5	-2.1	-5.0	1.4	50	0	67	54.5	50	0	67	54.5