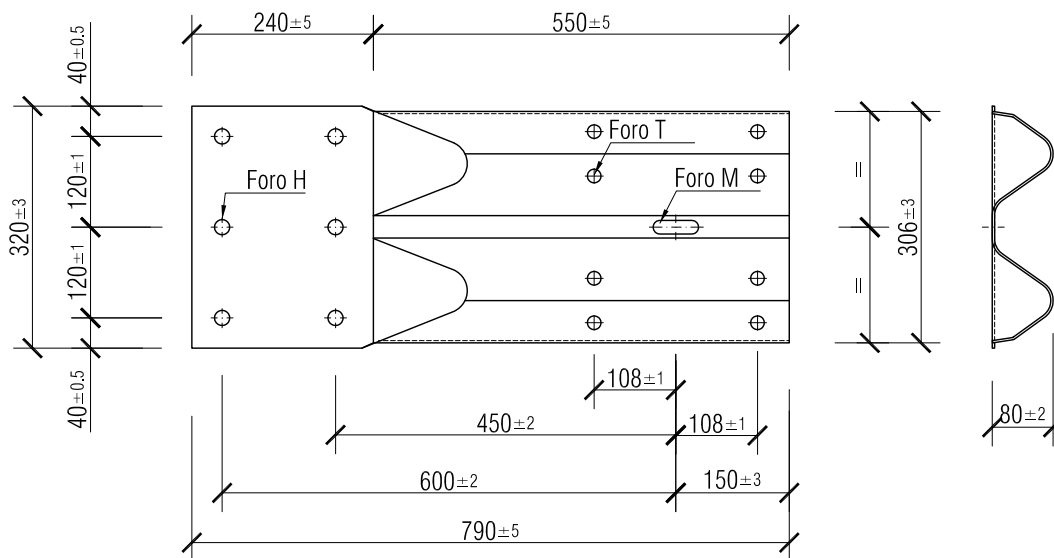
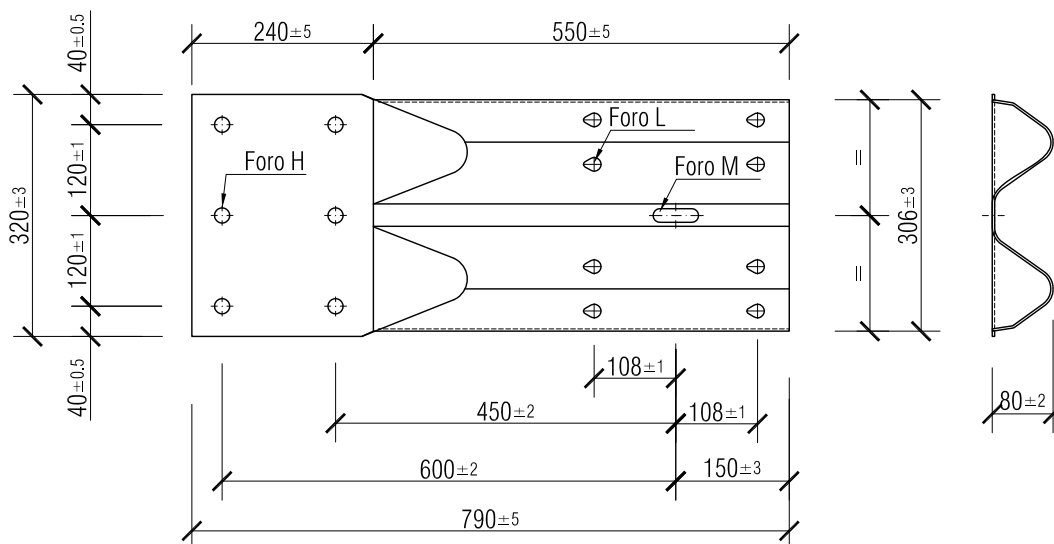


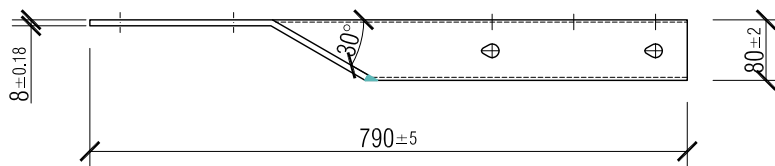
PERFORAZIONE CON FORI ROTONDI 1:10



PERFORAZIONE CON FORI A GOCCIA 1:10

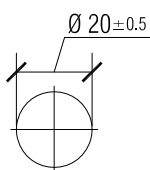


PIANTA 1:10

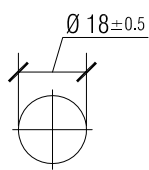


DETTAGLI FORI 1:2

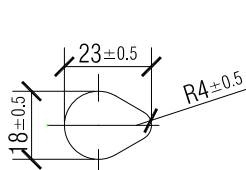
Dettaglio foro H



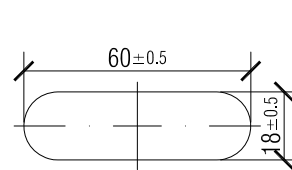
Dettaglio foro T



Dettaglio foro L



Dettaglio foro M



Dipartimento del territorio - Divisione delle costruzioni
via F. Zorzi 13 - Casella Postale 2170 - 6501 BELLINZONA

6.321

Data: 16.02.2015

Terminale per barriere tipo TI 001, 002 e 003

Mod. :

Dis. : MB

Fissaggio al muro

Resp. : DeB

Contr. : CN

Scala : 1:10 - 1:2