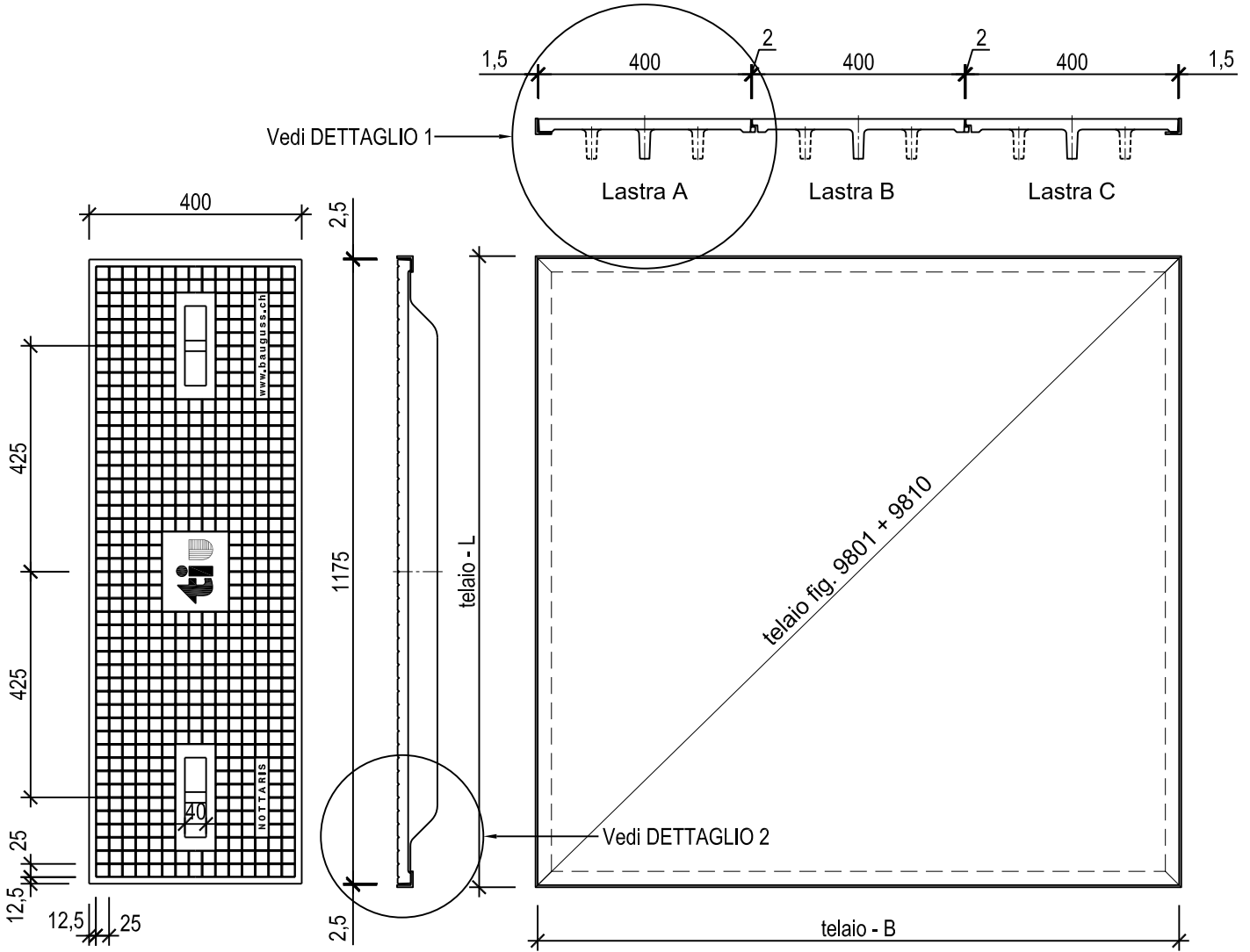


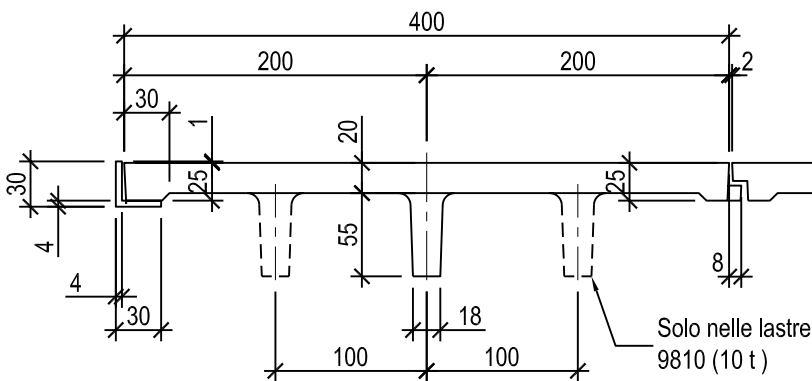
# DETTAGLIO 1:12.5



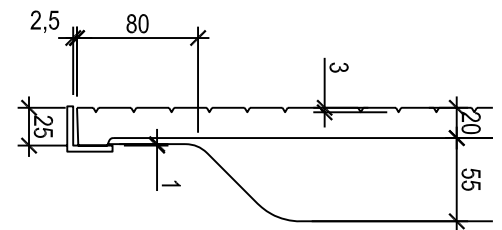
## Dimensione telaio

	L	B
Camera C1	1180	1207
Camera C2	1180	2012
Camera C3 e L3	1180	3220

## DETTAGLIO 1 1:5



## DETTAGLIO 2 1:5



Dipartimento del territorio - Divisione delle costruzioni  
via F. Zorzi 13 - Casella Postale 2170 - 6501 BELLINZONA

4.127

Data: 15.02.2006

Lastre di copertura tipo Nottaris

Mod. : 28.04.2006

Dis. : M.Ge.

Resp. : SB

Contr. :

Dettagli

Scala : 1:12.5 - 1:5